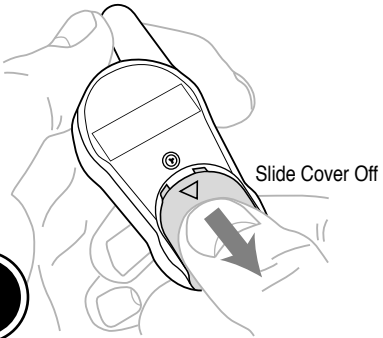
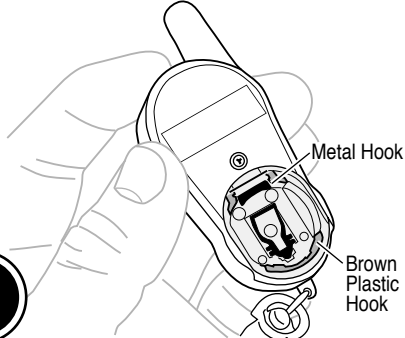
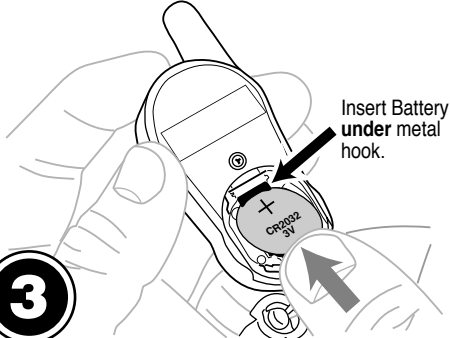
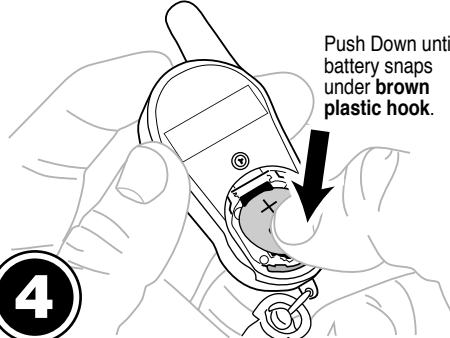


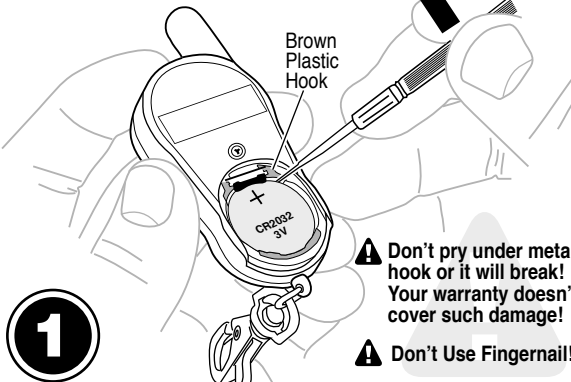
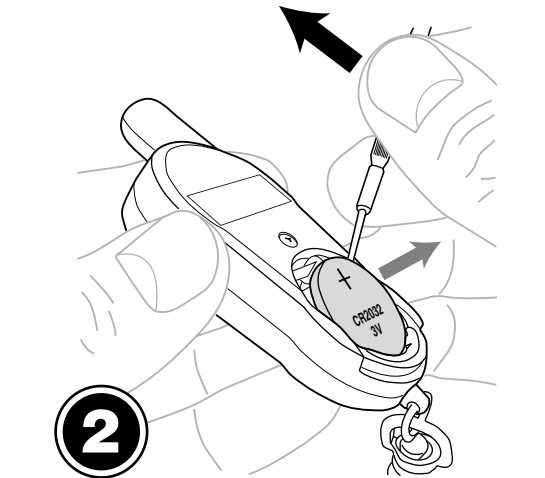
VISION TX-35 & TX-36

Battery Replacement Procedure

INSERTING BATTERY

<p>1 Removing Battery Cover</p>  <p>Slide Cover Off</p>	<p>2 Battery Cover Removed</p>  <p>Metal Hook Brown Plastic Hook</p>	<p>3 Inserting Battery 1 of 2</p>  <p>Insert Battery under metal hook.</p>	<p>4 Inserting Battery 2 of 2</p>  <p>Push Down until battery snaps under brown plastic hook.</p>
---	---	--	---

REMOVING BATTERY

<p>1</p> <p>Insert small tool between battery and brown plastic hook, then push up as shown. This will release battery from the metal hook.</p>  <p>Brown Plastic Hook</p> <p>⚠ Don't pry under metal hook or it will break! Your warranty doesn't cover such damage!</p> <p>⚠ Don't Use Fingernail!</p>	<p>2</p>  <p>Push Down until battery snaps under brown plastic hook.</p>
---	---

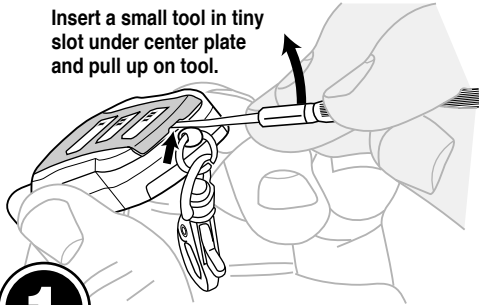
VISION TX-35 & TX-36

Center Plate Removal & Film Installation

CENTER PLATE

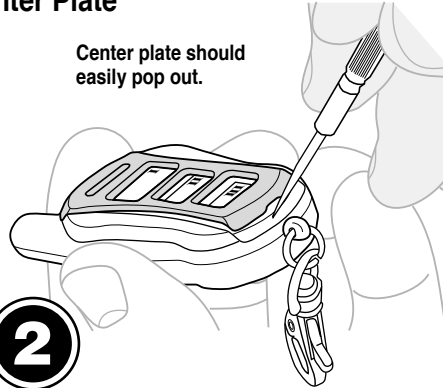
Removing Center Plate

Insert a small tool in tiny slot under center plate and pull up on tool.



1

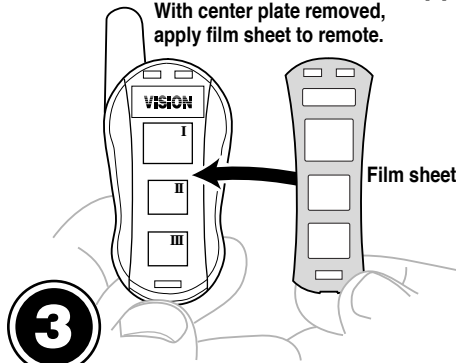
Center plate should easily pop out.



2

Applying Film

With center plate removed, apply film sheet to remote.



3

Align film sheet on the remote using the holes as a guide.

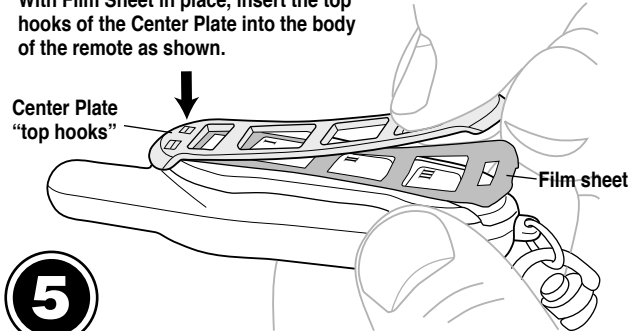


4

Replacing Center Plate

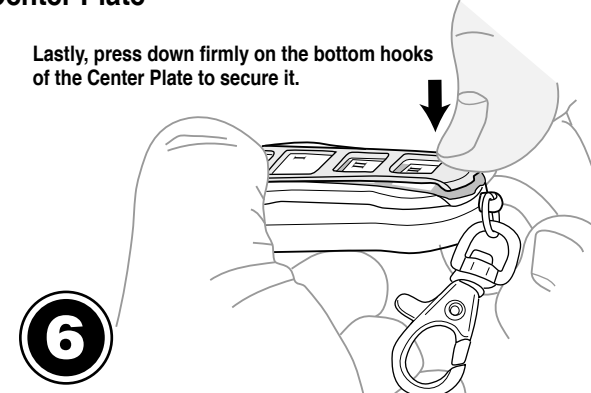
With Film Sheet in place, insert the top hooks of the Center Plate into the body of the remote as shown.

Center Plate "top hooks"



5

Lastly, press down firmly on the bottom hooks of the Center Plate to secure it.



6

